

Note:  
 Flow rates: 60 l/min  
 Suction height: 3 - 4 mtrs  
 Rated power: 0,47 kw  
 Rated voltage: 12V  
 Rated speed: 4200 rpm  
 Operation mode: S2-5 min  
 Protection: IP 55  
 Rotation: C.W.D.E  
 Weight: 8,5 kg

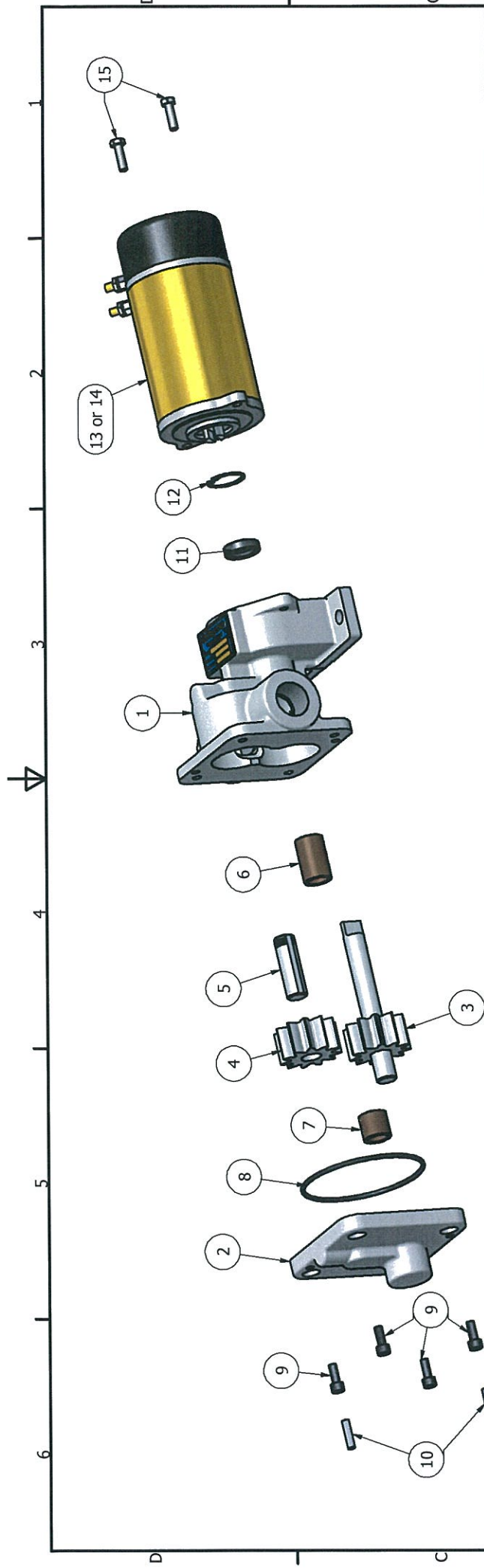


TITLE  
 MEASURE  
 DELTA 676 - 12V  
 REFUELLING PUMP

REV	
DWG NO	Delta 676 12V
SIZE	A3
SCALE	


18.06.2013	
18.06.2013	
Terje Rumman	
CHECKED	
QA	
MFG	
APPROVED	

ALL MEASURE IS UNQUALIFIED



Item	Qty	Description	Art. no.
15	2	Hex. head screw	250957
14	1	El. motor 12V	250673
13	1	El. motor 24V	250672
12	1	Seeger ring	11280
11	1	Seal ring	10470
10	2	Guide	12540
9	4	Umbr. screw	250962
8	1	O-ring	12630
7	1	Oil Bronze Bearing	10450
6	1	Oil Bronze Bearing	10460
5	1	Shaft	251150 B
4	1	Gear	251149
3	1	Gear w/main shaft	251148
2	1	End cover	251008
1	1	Pumphousing with bracket	251034

DRAWN		18.06.2013	
Terje Runnan			
CHECKED		18.06.2013	
EH			
QA			
MFG			
APPROVED			
SIZE	DWG NO	REV	
A3	Delta 676 Deleliste		
SCALE			


  
**DELTA 676 12V and 24V**  
**PARTS LIST**

SHEET 1 OF 1