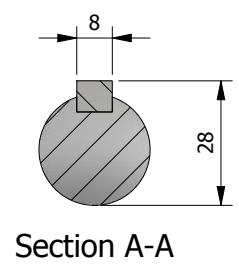
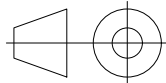


NOTE:
Deltapump gear-pumps functions in both directions
INLET/OUTLET(Flow) is selectable if you change
the motor turn direction.

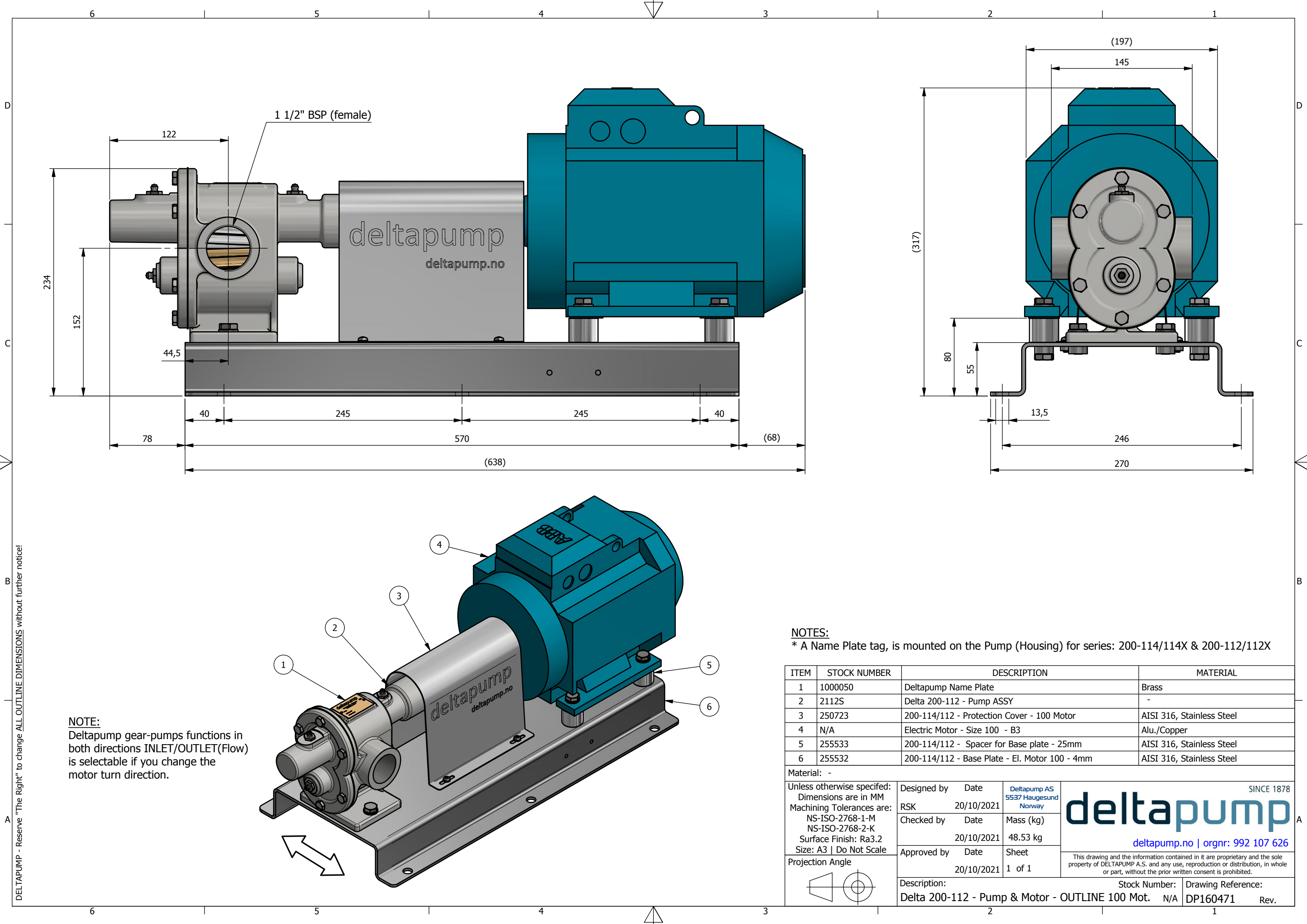
Notes
Keyway dimensions:
Length : 36mm
Width : 8mm



Material: -			
Unless otherwise specified: Dimensions are in MM Machining Tolerances are: NS-ISO-2768-1-M NS-ISO-2768-2-K Surface Finish: Ra3.2 Size: A3 Do Not Scale	Designed by	Date	Deltapump AS 5537 Haugesund Norway
	RSK	16/12/2019	
	Checked by	Date	Mass (kg)
		16/12/2019	N/A
	Approved by	Date	Sheet
Projection Angle 		16/12/2019	1 of 1
	Description: Delta 200-112 - Pump ASSY - OUTLINE		
		Stock Number: 2112S	Drawing Reference: DP160338
			Rev. 0



This drawing and the information contained in it are proprietary and the sole property of DELTAPUMP A.S. and any use, reproduction or distribution, in whole or part, without the prior written consent is prohibited.



NOTE:
Deltapump gear-pumps functions in both directions INLET/OUTLET(Flow) is selectable if you change the motor turn direction.

NOTES:
* A Name Plate tag, is mounted on the Pump (Housing) for series: 200-114/114X & 200-112/112X

ITEM	STOCK NUMBER	DESCRIPTION	MATERIAL
1	1000050	Deltapump Name Plate	Brass
2	2112S	Delta 200-112 - Pump ASSY	-
3	250723	200-114/112 - Protection Cover - 100 Motor	AISI 316, Stainless Steel
4	N/A	Electric Motor - Size 100 - B3	Alu./Copper
5	255533	200-114/112 - Spacer for Base plate - 25mm	AISI 316, Stainless Steel
6	255532	200-114/112 - Base Plate - El. Motor 100 - 4mm	AISI 316, Stainless Steel

Material: -			
Unless otherwise specified: Dimensions are in MM Machining Tolerances are: NS-ISO-2768-1-M NS-ISO-2768-2-K Surface Finish: Ra3.2 Size: A3 Do Not Scale	Designed by	Date	Deltapump AS 5537 Haugesund Norway
	RSK	20/10/2021	
	Checked by	Date	Mass (kg)
		20/10/2021	48.53 kg
Projection Angle	Approved by	Date	Sheet
		20/10/2021	1 of 1
Description:		Stock Number:	Drawing Reference:
Delta 200-112 - Pump & Motor - OUTLINE 100 Mot.		N/A	DP160471 Rev.

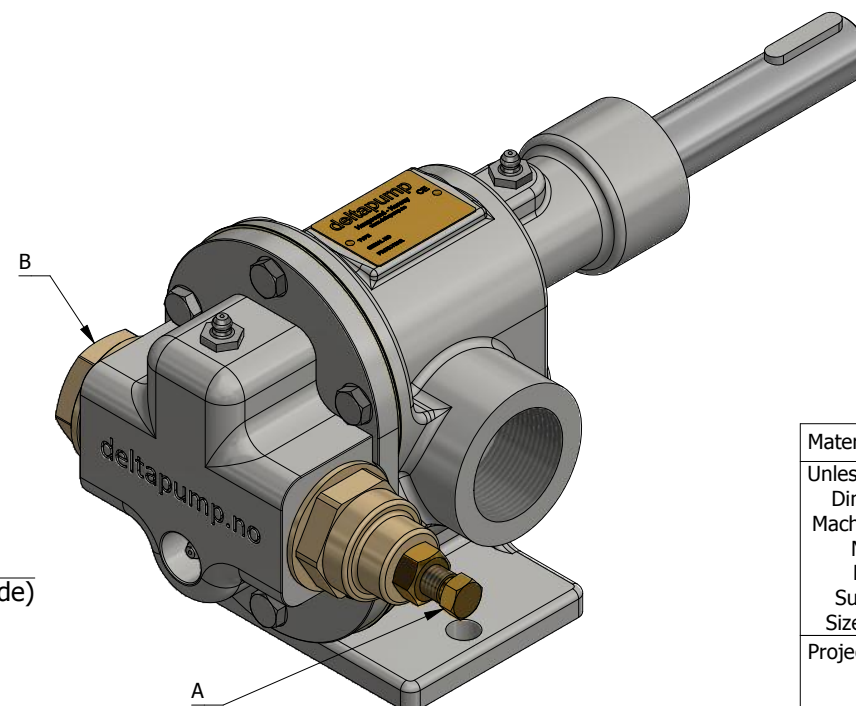
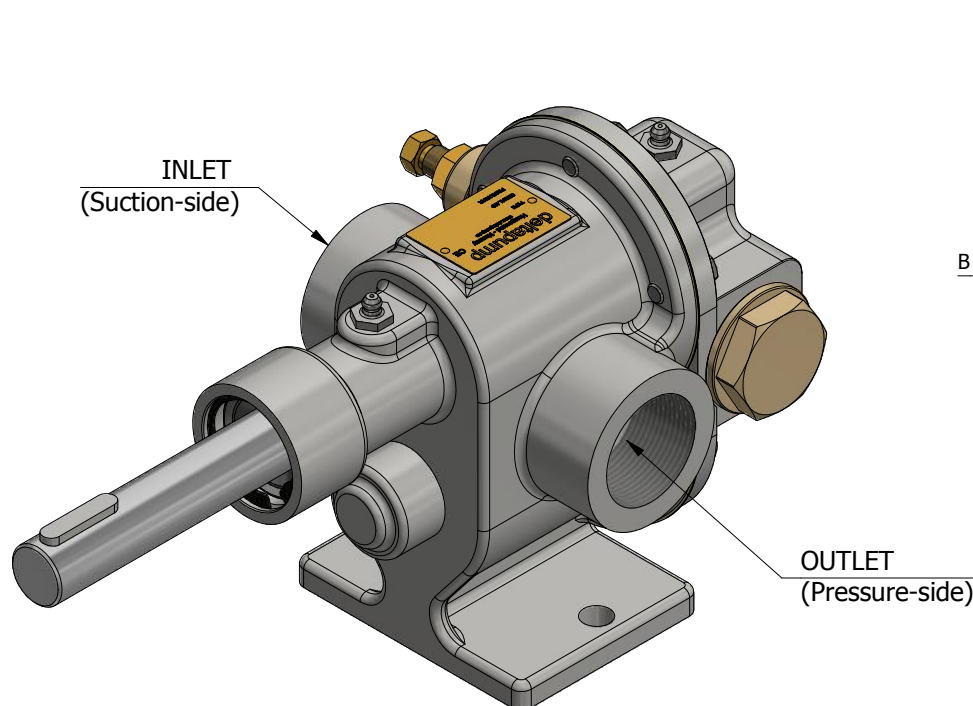
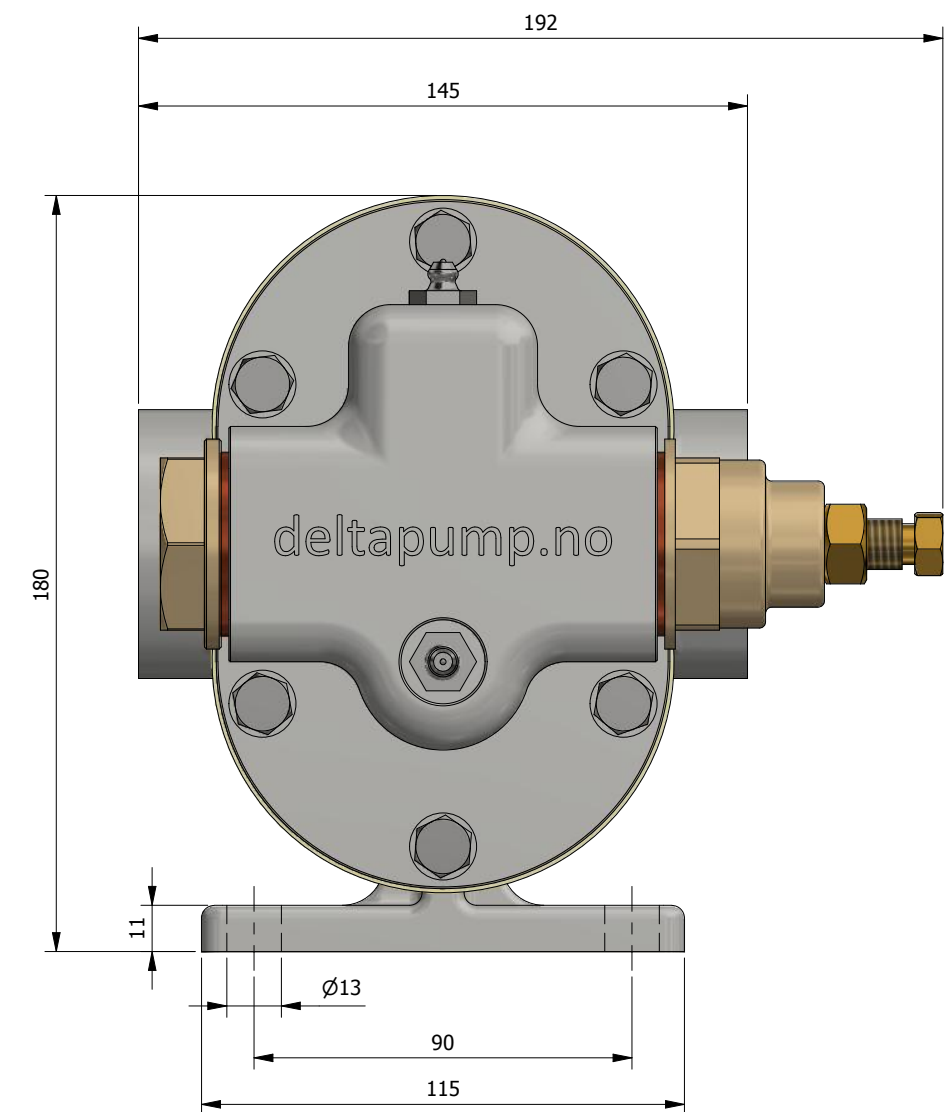
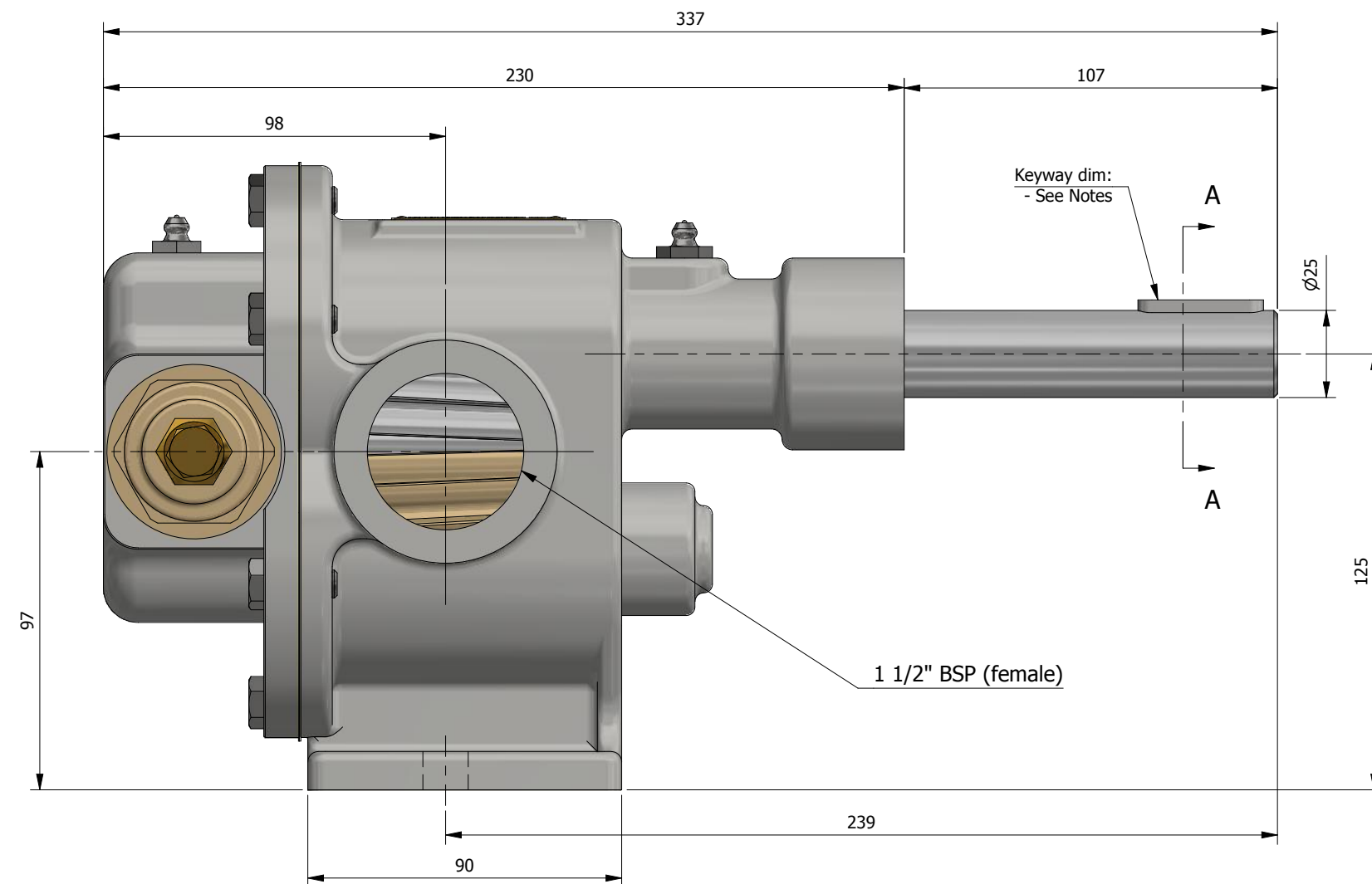
SINCE 1878

deltapump

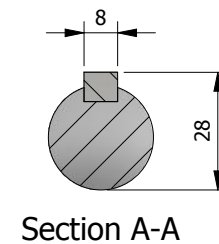
deltapump.no | orgnr: 992 107 626

This drawing and the information contained in it are proprietary and the sole property of DELTAPUMP A.S. and any use, reproduction or distribution, in whole or part, without the prior written consent is prohibited.

NOTE:
This Pump, have an option to change Flow-direction to ease the install process. If a customer would like to change the direction of flow:
* First exchange part "A" (valve-assembly) for "B" (plug insert)
* You also need to reverse the rotation of the electric motor.
The valve (A) SHOULD ALWAYS be placed on the pumps Suction-side/INLET to maintain the Safety-Valve functionality!

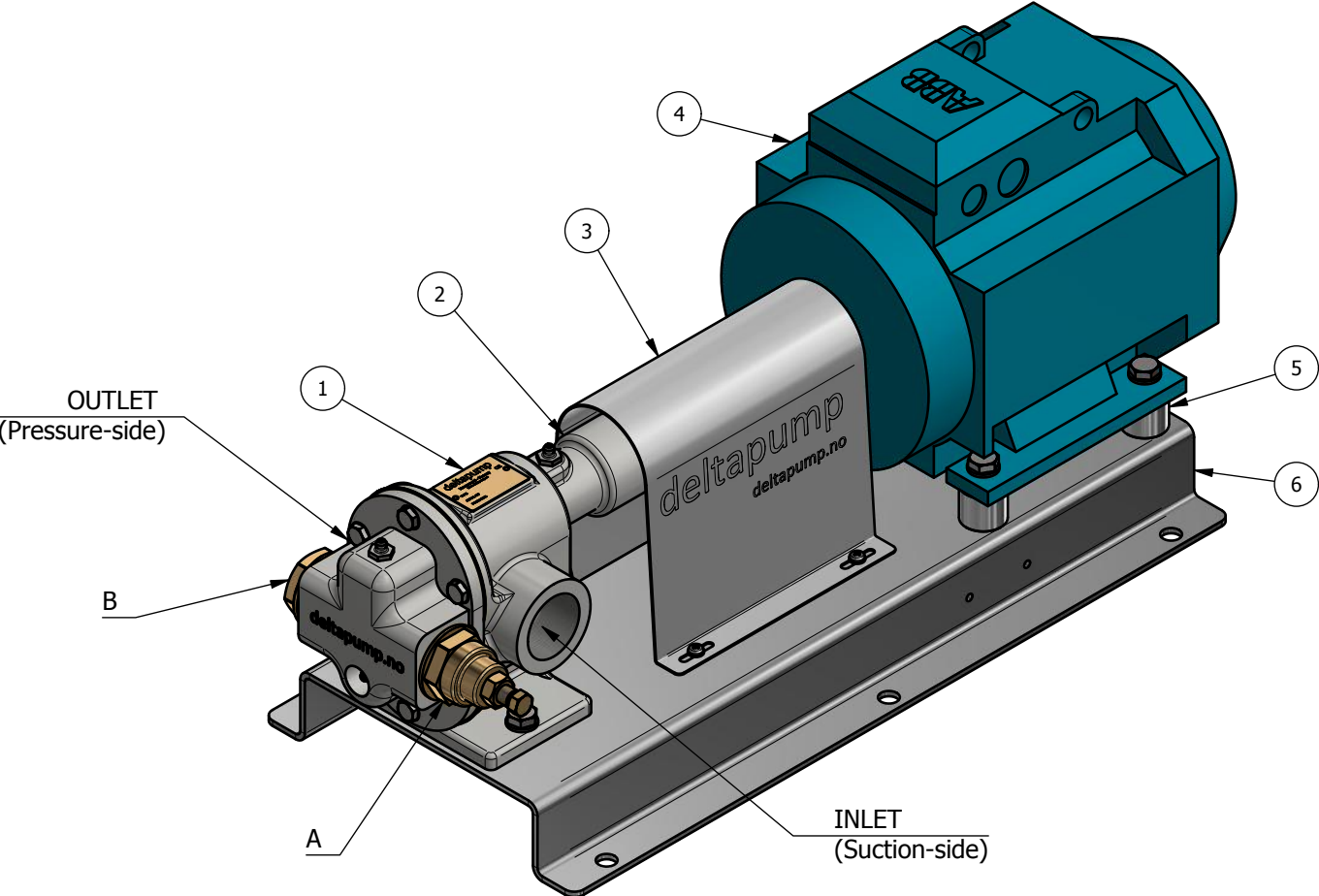
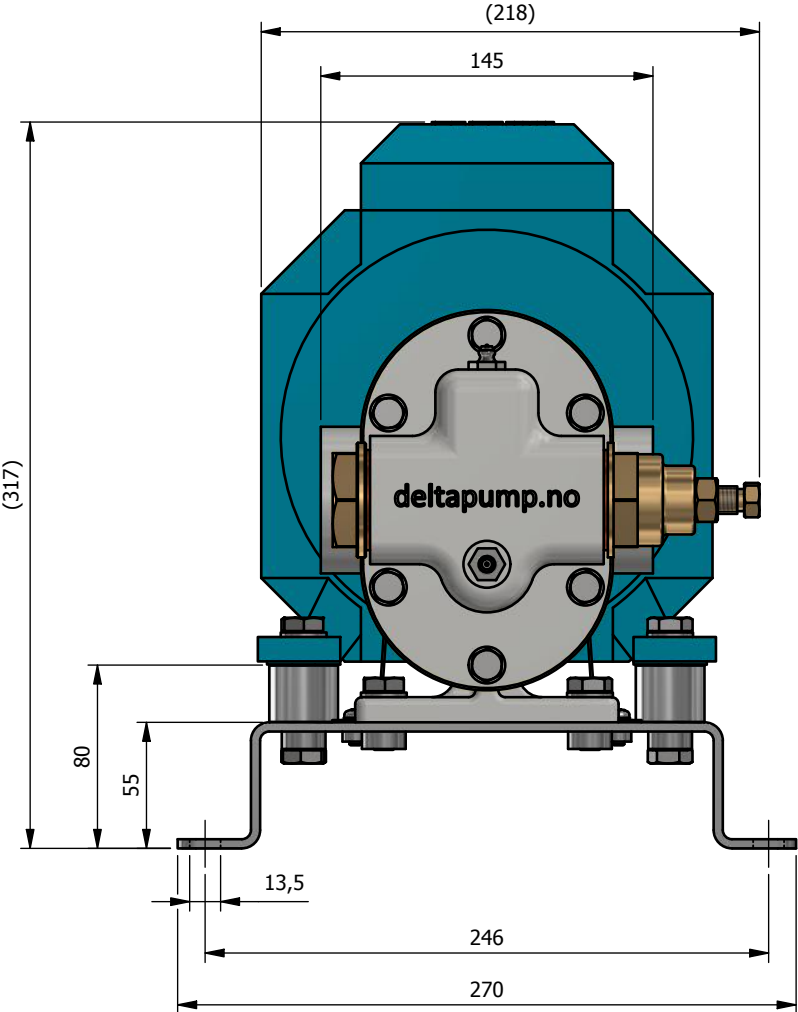
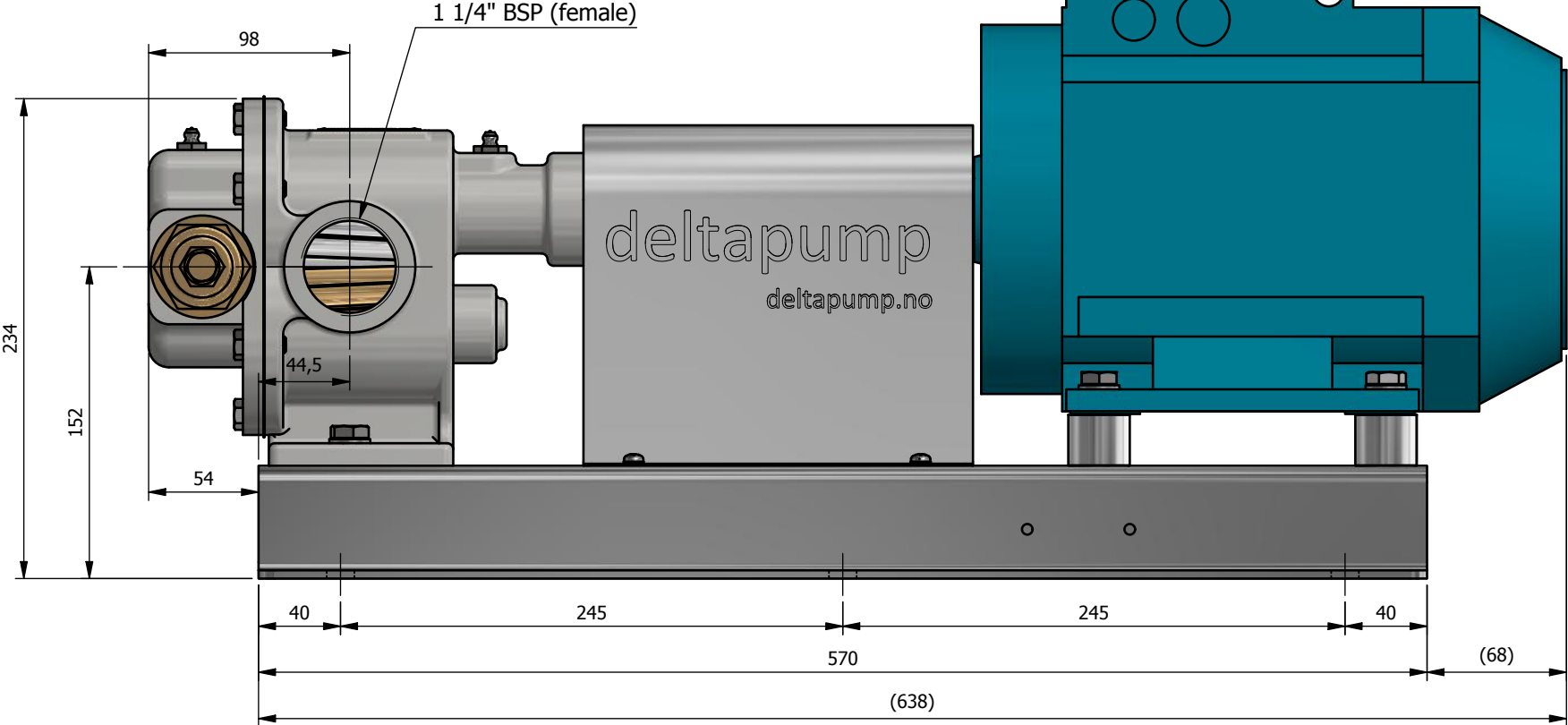


Notes
Keyway dimensions:
Length : 36mm
Width : 8mm



Material: -				SINCE 1878	
Unless otherwise specified: Dimensions are in MM		Designed by	Date	deltapump	
Machining Tolerances are: NS-ISO-2768-1-M NS-ISO-2768-2-K Surface Finish: Ra3.2 Size: A3 Do Not Scale		RSK	16/12/2019		
Projection Angle		Checked by	Date	Mass (kg)	deltapump.no orgnr: 992 107 626
			16/12/2019	13.70 kg	This drawing and the information contained in it are proprietary and the sole property of DELTAPUMP A.S. and any use, reproduction or distribution, in whole or part, without the prior written consent is prohibited.
		Approved by	Date	Sheet	Stock Number: Drawing Reference:
			16/12/2019	1 of 1	2112SX DP160339 Rev. 0
		Description: Delta 200-112X - Pump ASSY - OUTLINE			

NOTE:
This Pump, have an option to change Flow-direction to ease the install process. If a customer would like to change the direction of flow:
* First exchange part "A" (valve-assembly) for "B" (plug insert)
* You also need to reverse the rotation of the electric motor.
The valve (A) SHOULD ALWAYS be placed on the pumps suction-side/INLET to maintain the Safety-Valve functionality!



NOTES:
* A Name Plate tag, is mounted on the Pump (Housing) for series: 200-114/114X & 200-112/112X

ITEM	STOCK NUMBER	DESCRIPTION	MATERIAL
1	1000050	Deltapump Name Plate	Brass
2	2112SX	Delta 200-112X - Pump ASSY	-
3	250723	200-114/112 - Protection Cover - 100 Motor	AISI 316, Stainless Steel
4	N/A	Electric Motor - Size 100 - B3	Alu./Copper
5	255533	200-114/112 - Spacer for Base plate - 25mm	AISI 316, Stainless Steel
6	255532	200-114/112 - Base Plate - El. Motor 100 - 4mm	AISI 316, Stainless Steel

Material: -

Unless otherwise specified:
Dimensions are in MM
Machining Tolerances are:
NS-ISO-2768-1-M
NS-ISO-2768-2-K
Surface Finish: Ra3.2
Size: A3 | Do Not Scale

Projection Angle

Designed by	Date	Deltapump AS 5537 Haugesund Norway	deltapump SINCE 1878 deltapump.no orgrnr: 992 107 626
RSK	20/10/2021	Mass (kg)	
Checked by	Date	50.50 kg	
20/10/2021	Approved by	Date	Sheet
20/10/2021	20/10/2021	1 of 1	

Description: Delta 200-112X - Pump & Motor - OUTLINE 100 Mot. N/A

Stock Number: N/A

Drawing Reference: DP160473

Rev.

Pump Characteristics DELTA 200-112(X)

