

NOTE:
Deltapump gear-pumps functions in both directions INLET/OUTLET(Flow) is selectable if you change the motor turn direction.

- NOTES:**
- * A Name Plate, is mounted on the Pump
 - * Flange DN50: PCD Ø125 - 4 Threaded holes M16

| ITEM | QTY | STOCK NUMBER | DESCRIPTION | MATERIAL |
|------|-----|--------------|-------------------------------|---------------------------|
| 1 | 1 | 850 | Delta 800-50 - Pump ASSY | - |
| 2 | 1 | N/A | Electric Motor - Size 112 -B5 | Alu./copper |
| 3 | 2 | 255492 | 800-50 - Protection Cover | AISI 316, Stainless Steel |

Material: -
Unless otherwise specified:
Dimensions are in MM
Machining Tolerances are:
NS-ISO-2768-1-M
NS-ISO-2768-2-K
Surface Finish: Ra3.2
Size: A3 | Do Not Scale
Projection Angle

Designed by
RSK

Date
21/09/2021

Checked by

Date
21/09/2021

Approved by

Date
21/09/2021

Description:
Delta 800-50 - Pump & Motor - OUTLINE 112 Motor

Deltapump AS
5537 Haugesund
Norway

Mass (kg)
75.68 kg

Sheet
1 of 1

deltapump

deltapump.no | orgnr: 992 107 626

SINCE 1878

This drawing and the information contained in it are proprietary and the sole property of DELTAPUMP A.S. and any use, reproduction or distribution, in whole or part, without the prior written consent is prohibited.

Stock Number:
N/A

Drawing Reference:
DP160145

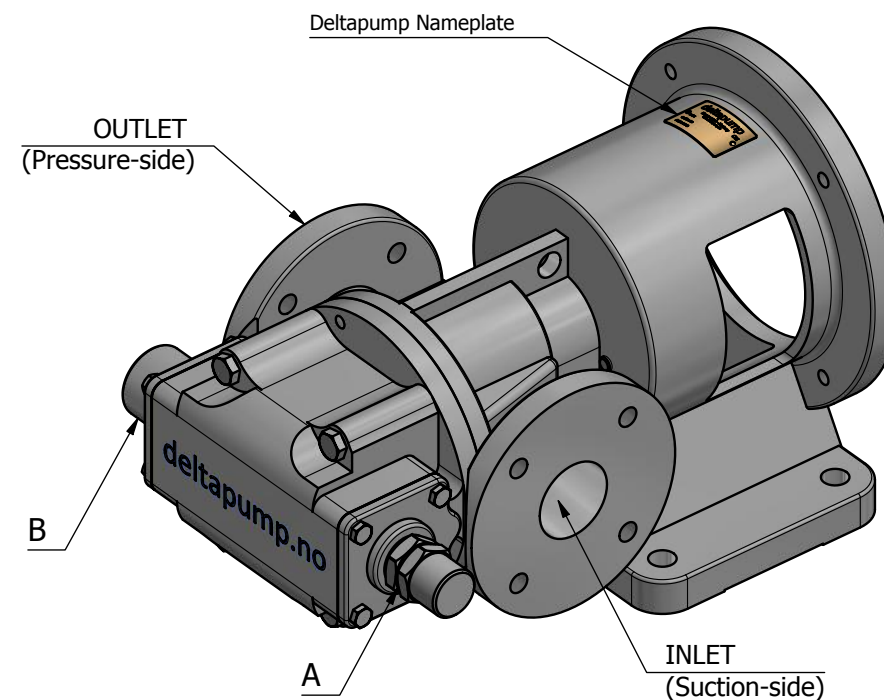
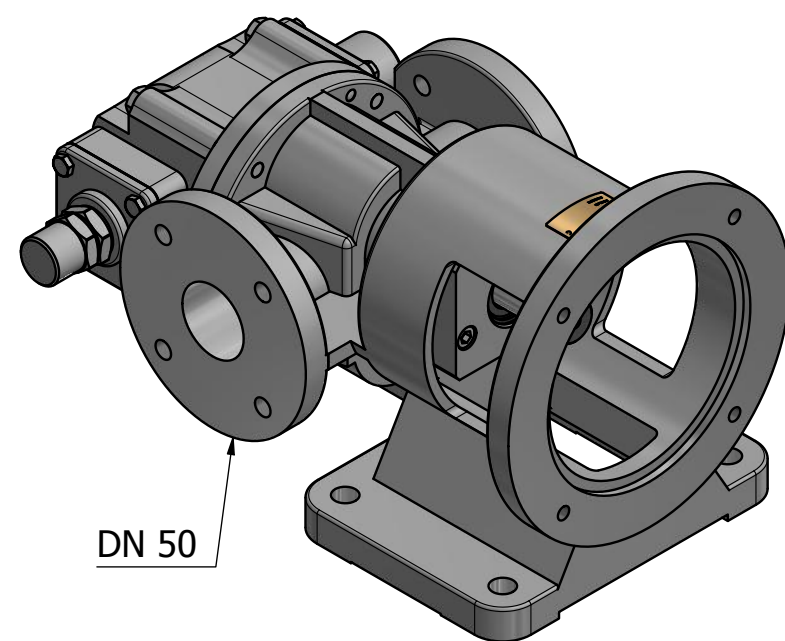
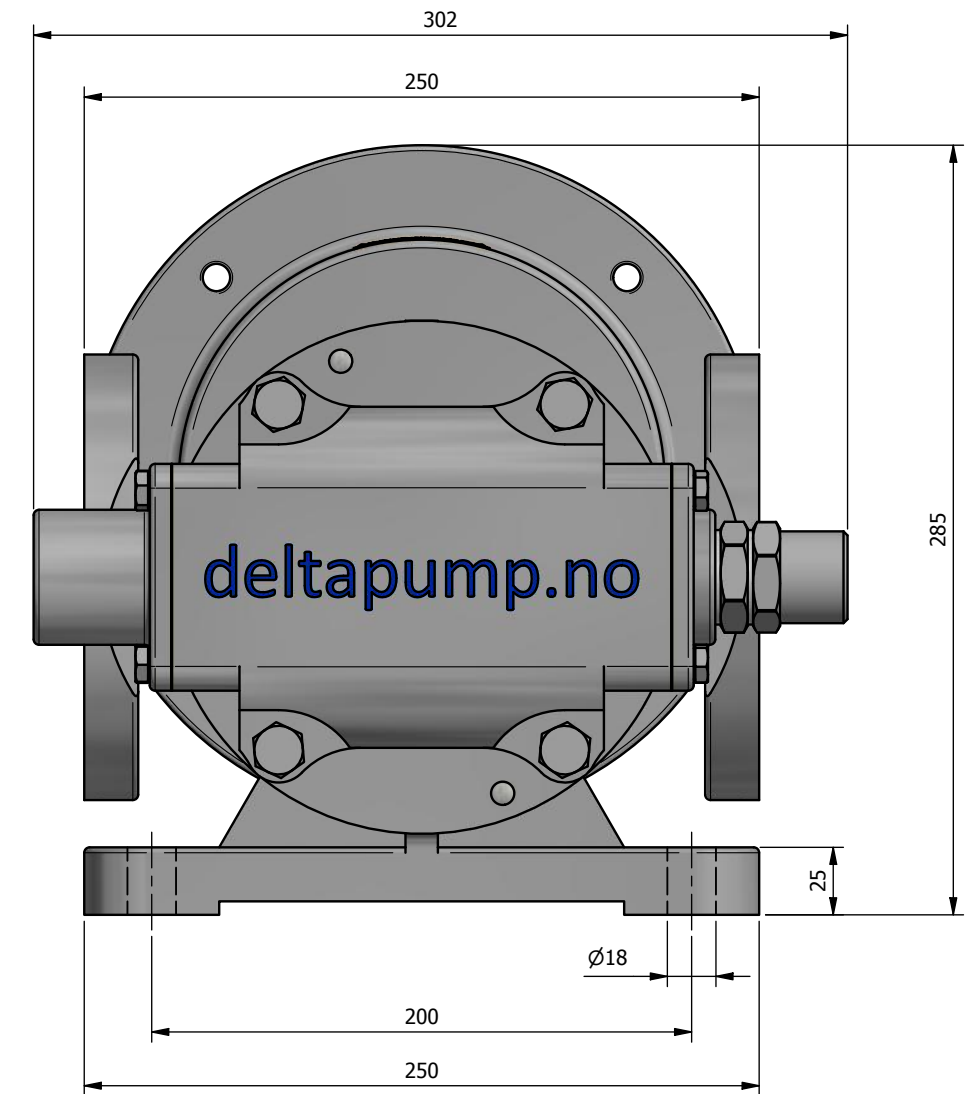
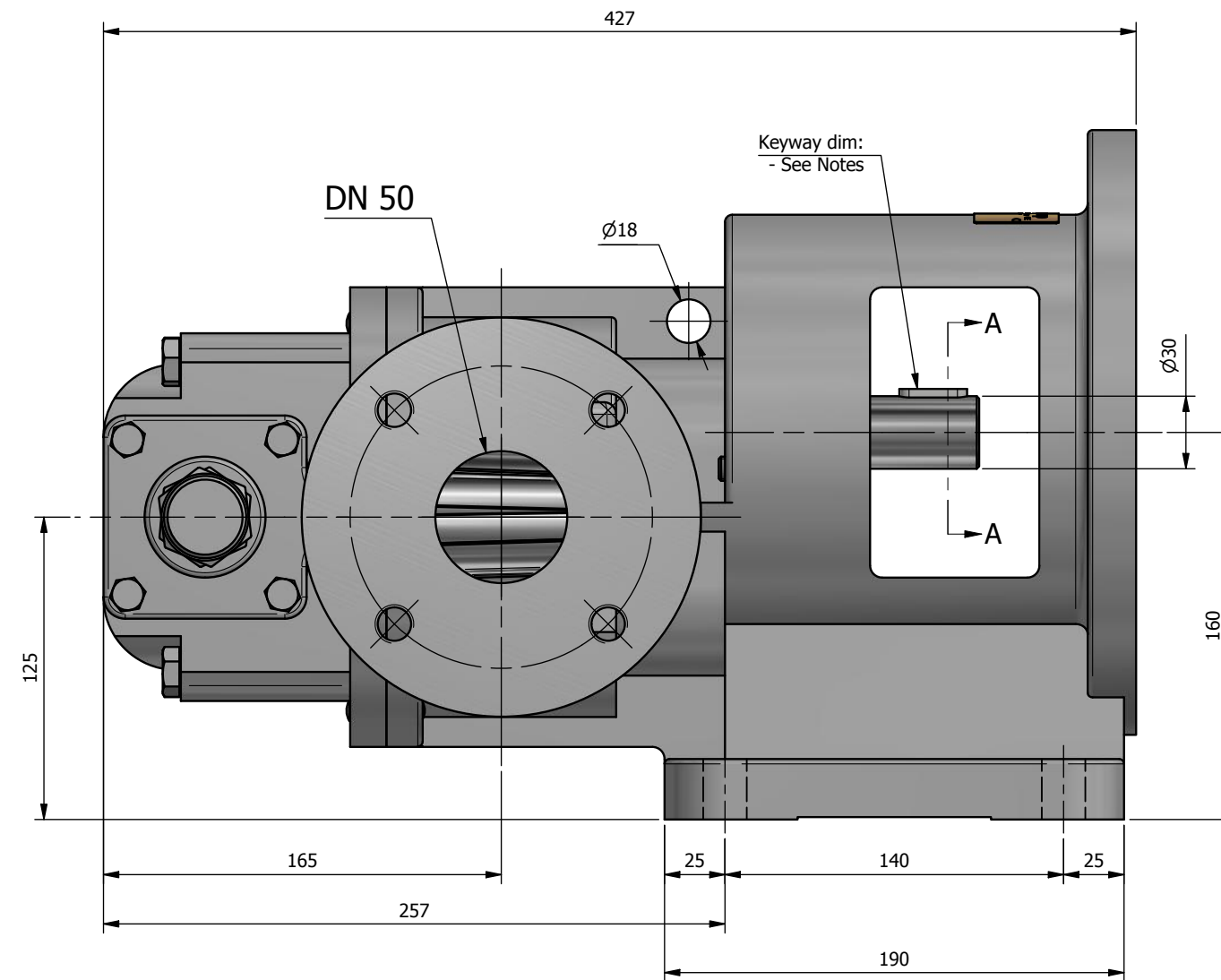
Rev.

NOTE:

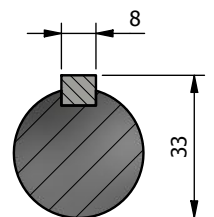
This Pump, have an option to change Flow-direction to ease the install process. If a customer would like to change the direction of flow:

* First exchange part "A" (valve-assembly) for "B" (plug insert)

* You also need to reverse the rotation of the electric motor. The valve (A) SHOULD ALWAYS be placed on the pumps suction-side/INLET to maintain the Safety-Valve functionality!



Notes
Keyway dimensions:
Length : 28mm
Width : 8mm



Section A-A

NOTES:

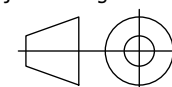
* A Name Plate, is mounted on the Pump

* Flange DN50: PCD Ø125 - 4 Threaded holes M16

Material: -

Unless otherwise specified:
Dimensions are in MM
Machining Tolerances are:
NS-ISO-2768-1-M
NS-ISO-2768-2-K
Surface Finish: Ra3.2
Size: A3 | Do Not Scale

Projection Angle



| | | |
|-------------|------------|--|
| Designed by | Date | Deltapump AS 5537 Haugesund Norway |
| RSK | 31/08/2021 | |
| Checked by | Date | Mass (kg) |
| | 31/08/2021 | 51.81 kg |
| Approved by | Date | Sheet |
| | 31/08/2021 | 1 of 1 |

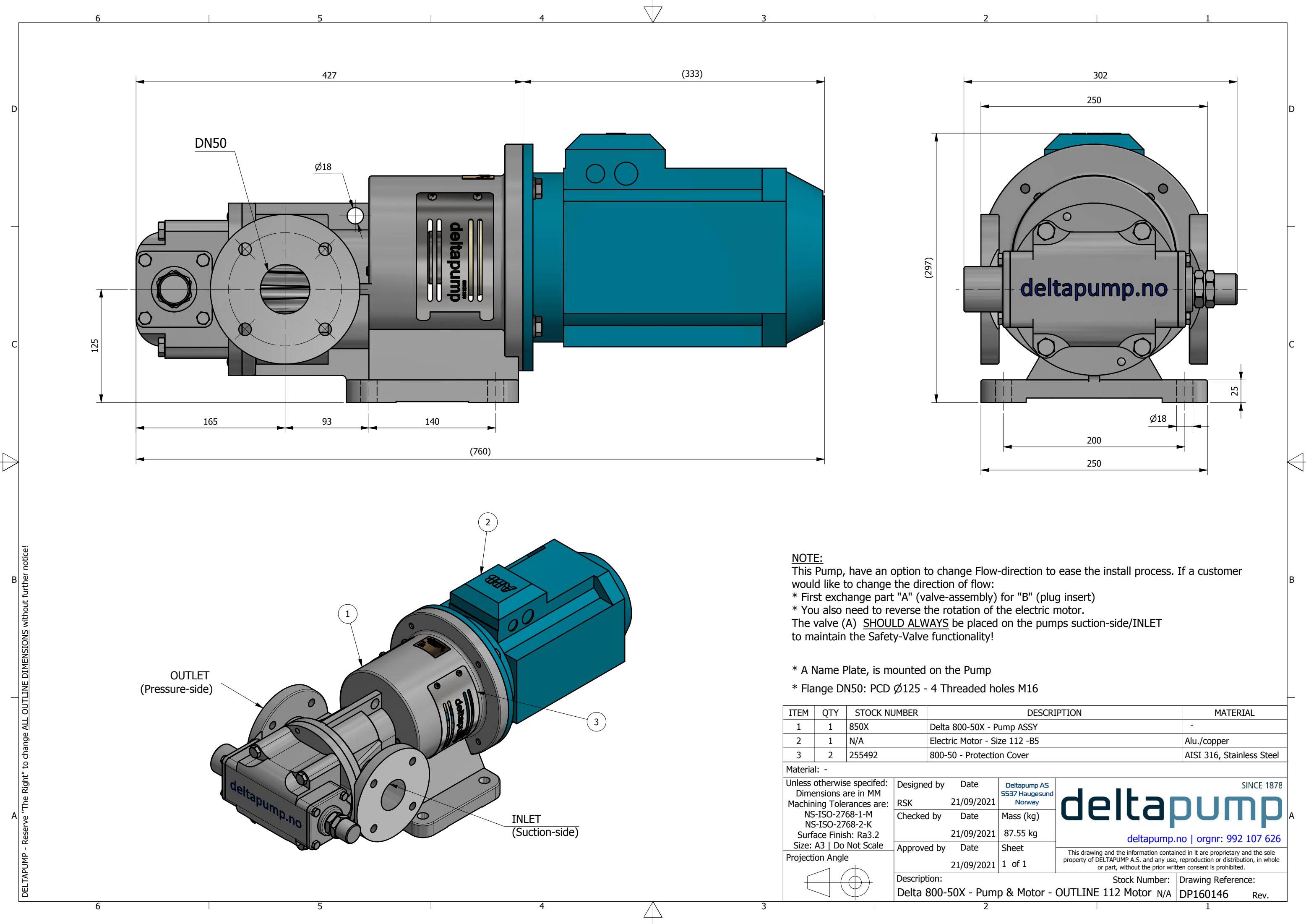
Description:
Delta 800-50X - Pump ASSY - OUTLINE

Stock Number:
850X

Drawing Reference:
DP160147 Rev.

SINCE 1878
deltapump
deltapump.no | orgnr: 992 107 626

This drawing and the information contained in it are proprietary and the sole property of DELTAPUMP A.S. and any use, reproduction or distribution, in whole or part, without the prior written consent is prohibited.



NOTE:
This Pump, have an option to change Flow-direction to ease the install process. If a customer would like to change the direction of flow:
* First exchange part "A" (valve-assembly) for "B" (plug insert)
* You also need to reverse the rotation of the electric motor.
The valve (A) SHOULD ALWAYS be placed on the pumps suction-side/INLET to maintain the Safety-Valve functionality!

- * A Name Plate, is mounted on the Pump
- * Flange DN50: PCD Ø125 - 4 Threaded holes M16

| ITEM | QTY | STOCK NUMBER | DESCRIPTION | MATERIAL |
|------|-----|--------------|-------------------------------|---------------------------|
| 1 | 1 | 850X | Delta 800-50X - Pump ASSY | - |
| 2 | 1 | N/A | Electric Motor - Size 112 -B5 | Alu./copper |
| 3 | 2 | 255492 | 800-50 - Protection Cover | AISI 316, Stainless Steel |

Material: -
Unless otherwise specified:
Dimensions are in MM
Machining Tolerances are:
NS-ISO-2768-1-M
NS-ISO-2768-2-K
Surface Finish: Ra3.2
Size: A3 | Do Not Scale
Projection Angle

Designed by
RSK

Date
21/09/2021

Checked by

Date
21/09/2021

Approved by

Date
21/09/2021

Description:
Delta 800-50X - Pump & Motor - OUTLINE 112 Motor

Deltapump AS
5537 Haugesund
Norway

Mass (kg)
87.55 kg

Sheet
1 of 1

Stock Number:
N/A

Drawing Reference:
DP160146

SINCE 1878

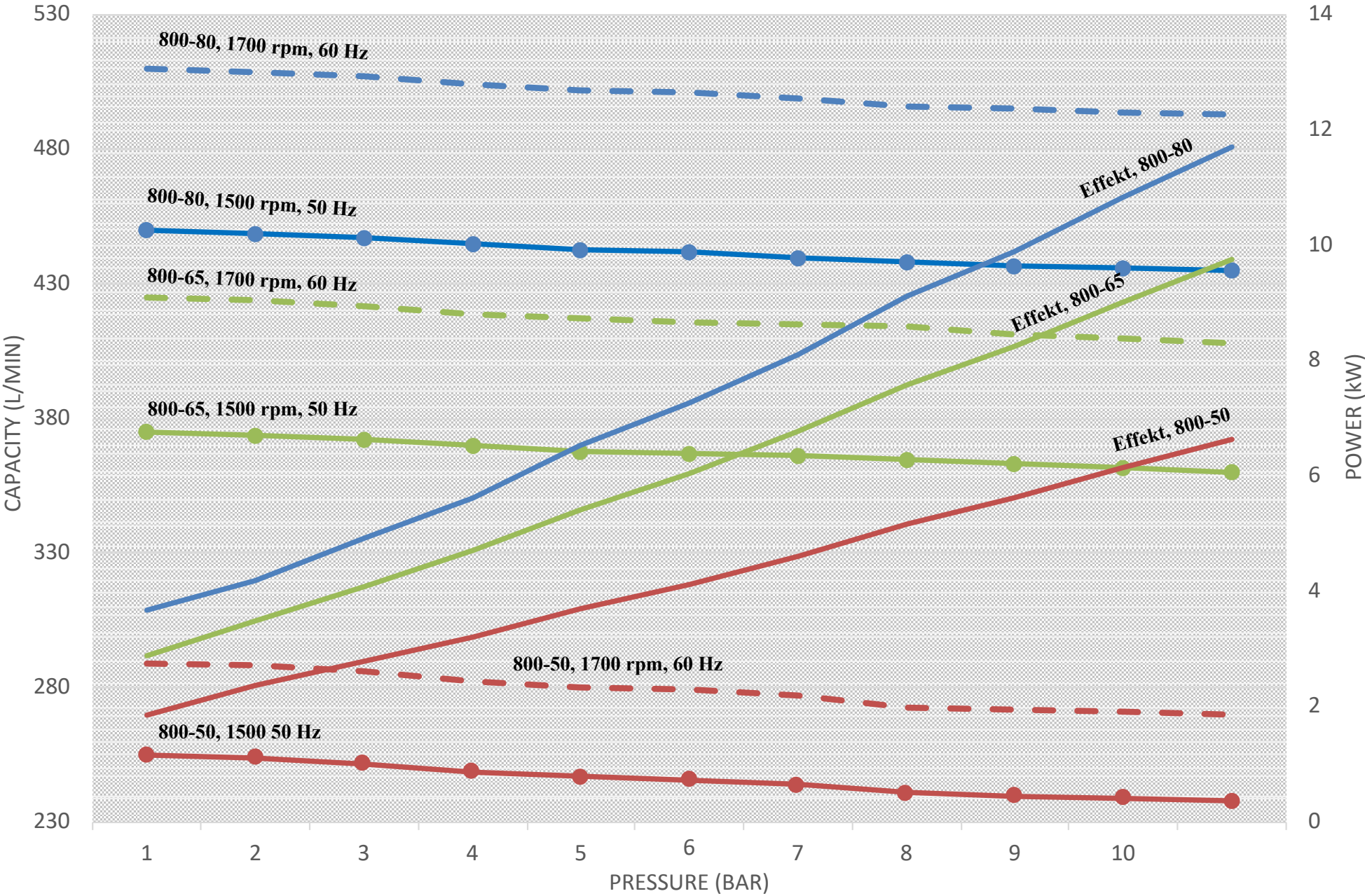
deltapump

deltapump.no | orgnr: 992 107 626

This drawing and the information contained in it are proprietary and the sole property of DELTAPUMP A.S. and any use, reproduction or distribution, in whole or part, without the prior written consent is prohibited.

Rev.

Pump Characteristics DELTA 800-series (El.motor 4-pole)



Pump Characteristics DELTA 800-series (El.motor 6-pole)

